

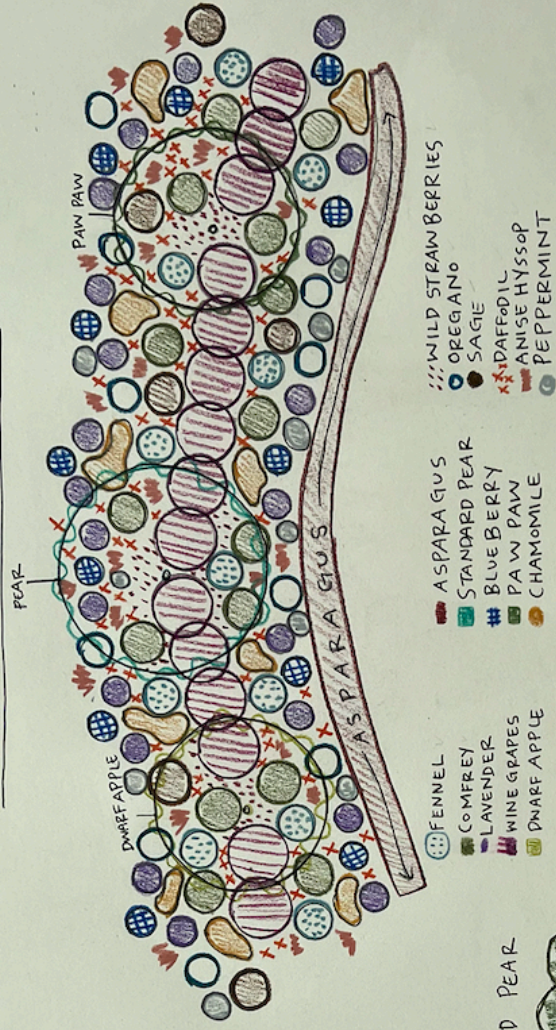
THE PERMA CULTURE VINEYARD SYSTEM

MEGAN GILGER

KEY DESIGN DETAILS

- PLANT ON CONTOUR OF HILL
- ADD SWALES ON CONTOUR TO USE WATER MORE EFFECTIVELY.
- INTEGRATE MORE PLANTS PARTICULARLY IN THE HERBACIOUS AND CANOPY LAYERS TO INCREASE BIODIVERSITY
- TRY ELIMINATING THE NEED FOR TRADITIONAL TRELLISING EQUIPMENT
- DENSE PLANTING OF GRAPES TO CREATE COMPETITION AND DRIVE DEEPER ROOTS QUICKER.
- PRUNING TREES WILL BE ESSENTIAL
- CAREFUL WITH SHADE COVERAGE
- LAYOUT MUST RUN NORTH TO SOUTH

VERTICAL STACKING DESIGN VIEW



HORIZONTAL DESIGN VIEW

